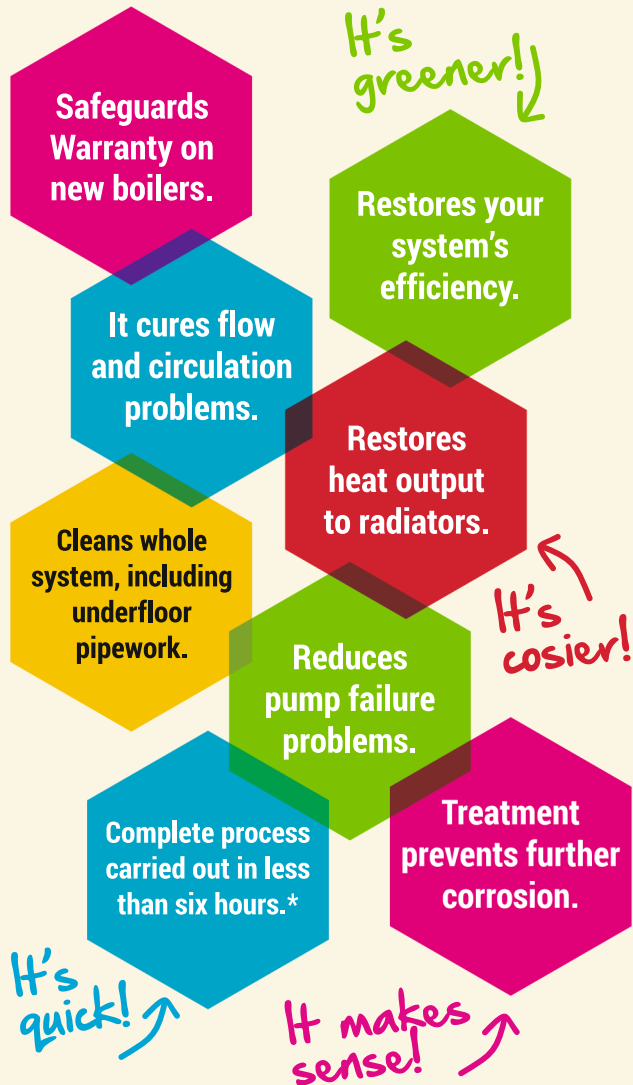


WHY HAVE YOUR SYSTEM POWER FLUSHED?



* Depending on system size.

CLEARFLOW POWER FLUSHING PROFESSIONAL

Correct use of the CLEARFLOW power flushing pump is the responsibility of the pump operator.

Kamco

Power flushing is not a high pressure operation, and it is suitable for most domestic wet central heating systems. It is carried out with minimal disturbance and disruption to the operation of the system, often without disconnecting the boiler or any radiators.

FOR BEST RESULTS ALWAYS USE KAMCO CHEMICALS



CENTRAL HEATING PROBLEMS?

Kamco

- Radiators with cold spots?
- Heating slow to warm up?
- Discoloured radiator water?
- An overly noisy boiler?
- Radiators need frequent bleeding?
- Radiators with pin hole leaks?
- Repeated circulator pump failures?

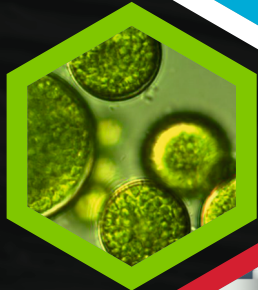
ANY OF THESE CAN MEAN A SYSTEM HAS CIRCULATION, SLUDGE AND SCALE ISSUES!

Bring back your glow with **CLEARFLOW POWER FLUSHING**



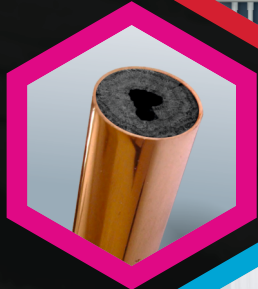
DON'T GIVE SLUDGE & SCALE HOUSEROOM

Re-heat cold radiators



Prevent build-up of algae, slime and sludge

Quieten down noisy boilers



Clear clogged pipes

Prevent pin hole leaks



KAMCO CLEARFLOW CLEANS & RESTORES YOUR SYSTEM

A GUIDE TO THE CLEARFLOW PROCESS

The Clearflow pump is connected into the heating system by one of several different methods. Most systems may be flushed from a single connection point.



Power flushing is a highly effective cleansing operation which works by pumping water at high velocity through the heating system. This loosens and mobilises harmful corrosion deposits, and suspends them in the rapidly moving water.

This process is made more effective by specialist cleansing chemicals such as POWER FLUSH FX2 and HYPERFLUSH, an instantaneous flow reversal device which creates turbulence in the radiators to optimise 'pick up' of the debris, and a magnetic filter to remove metallic debris from the water during the flush.

Once loosened, the unwanted debris is purged from the system with clean water.



PROTECT YOUR CENTRAL HEATING SYSTEM

CORROSION INHIBITOR DELIVERS GREATER PROTECTION FOR YOUR HEATING SYSTEM

A corrosion inhibitor should be added on completion of the CLEARFLOW power flushing process.

The combination of water, air, a mixture of metals, and even installation debris in a central heating system can result in internal corrosion, sludge formation in low flow areas, and scaling of boilers and heat exchangers.

Symptoms include cold panels and blockages in radiators, irritating boiler noises, a long recovery time after drawing off hot water, an inadequate water supply, and failure of pumps, radiators, and valves.

These problems are not inevitable, and good care and maintenance of a system, and the addition to the heating system of a quality corrosion and scale inhibitor, such as SYSTEMSAFE DM, will prevent and often cure them.

SYSTEMSAFE DM is a highly effective inhibitor and carries the Buildcert / NSF logo, to show that it has passed a tough corrosion cell test in a laboratory independently monitored by Buildcert / NSF to ensure compliance.



For details of your local
CLEARFLOW PROFESSIONAL
please see reverse.